

Monthly Operations Report for March 2025 at KLCU

Operations			
	Mar 2025	Mar 2024	Year over Year Change
TRANSITION	14	0	-
TOUCH & GO	98	0	-
TAKEOFF	172	0	-
LANDING	162	0	-
GO AROUND	19	0	-
Totals	568	0	-
NOTE: FLYOVER and TRANSITION are excluded from the total operations count. Operations classified as TOUCH & GO and GO AROUND are counted as two distinct operations, a landing and a takeoff respectively.			
Aircraft Type			
	Mar 2025	Mar 2024	Year over Year Change
Fixed wing single engine	555	0	-
Fixed wing multi engine	13	0	-
Engine Type			
Turbo-prop	2	0	-
Reciprocating	547	0	-
4 Cycle	19	0	-
Number of Engines			
1	555	0	-
2	13	0	-
Unknown			-
Average Daily Operations			
Monday	19	0	-
Tuesday	43	0	-
Wednesday	43	0	-
Thursday	28	0	-
Friday	16	0	-
Saturday	20	0	-
Sunday	38	0	-
Average per weekday	30	0	-
Average per weekend	29	0	-
Local vs. Transient			
Local	0	0	0.0%
Transient	568	0	0.0%

Monthly Operations Report for March 2025 at KLCU

Operations			
	Mar 2025	Mar 2024	Year over Year Change
Nights Stayed	36	0	-
Seats on Overnight Aircraft	144	0	-
Overnight Visitors @ 50%	72	0	0.0%
Runways			
RWY 09 GO AROUNDs	10	0	-
RWY 09 LANDINGS	57	0	-
RWY 09 TAKEOFFs	53	0	-
RWY 09 TOUCH & GOs	98	0	-
RWY 09 Total	218	0	-
RWY 27 GO AROUNDs	28	0	-
RWY 27 LANDINGS	105	0	-
RWY 27 TAKEOFFs	119	0	-
RWY 27 TOUCH & GOs	98	0	-
RWY 27 Total	350	0	-

Monthly Operations Report for March 2025 at KLCU

	Jan 2024	Jan 2023	Year over Year Change
Weight Class			
CLASS 1	568	0	-
Jet Traffic			
Operations	0	0	-
Largest aircraft			
Average seat count per jet	0	0	-

Most Active Aircraft

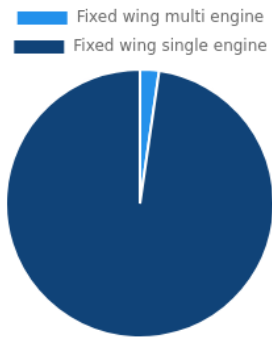
Registration	Manufacturer	Model	Operations	Percentage of Total
N8478U	CESSNA	172F	285	79.8%
N323FS	CESSNA	172P	65	18.2%
N7497T	CESSNA	172A	31	8.7%
N3771R	CESSNA	172H	21	5.9%
N1935T	PIPER	PA-28-180	14	3.9%
N733TX	CESSNA	172N	10	2.8%
N54079	CESSNA	172P	8	2.2%
N54960	CESSNA	172P	6	1.7%

Most Active Aircraft				
Registration	Manufacturer	Model	Operations	Percentage of Total
N3949X	PIPER	PA-28R-200	6	1.7%
N9796V	CESSNA	172M	6	1.7%

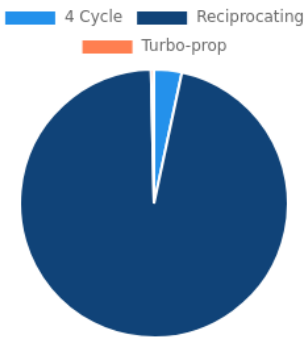
Most Active Owners		
Name	Operations	City
RED OAK AVIATION LLC	285	MINERAL
FREDERICKS HALL AVIATION LLC	67	MINERAL
LEFFLER GREG L	31	ZION CROSSROADS
KELLEY AIRCRAFT LLC	22	WEYERS CAVE
MCCAY BRIAN D	21	EARLYSVILLE
WEBBOE INVESTMENTS LLC	14	FALLS CHURCH
CHRISTIANSEN AVIATION LLC	11	WILMINGTON
FIRST ECLIPSE LIMITED	6	RICHMOND
BLUE RIDGE FLYERS	6	LEESBURG
BRASCHER HARRY M	6	SPOTSYLVANIA

Owner Locations		
City	Operations	Percentage of total
MINERAL	281	78.7%
ZION CROSSROADS	29	8.1%
EARLYSVILLE	21	5.9%
FALLS CHURCH	13	3.6%
WEYERS CAVE	13	3.6%

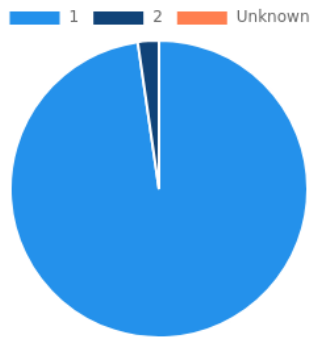
Aircraft Type



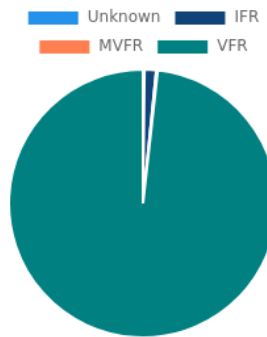
Engine Type



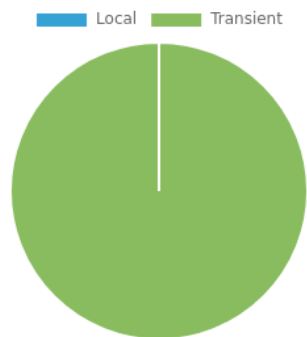
Number of Engines



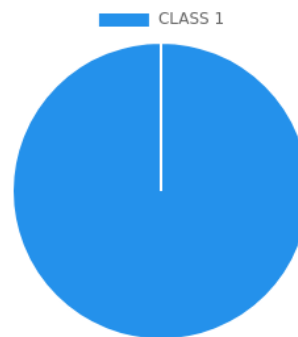
Weather



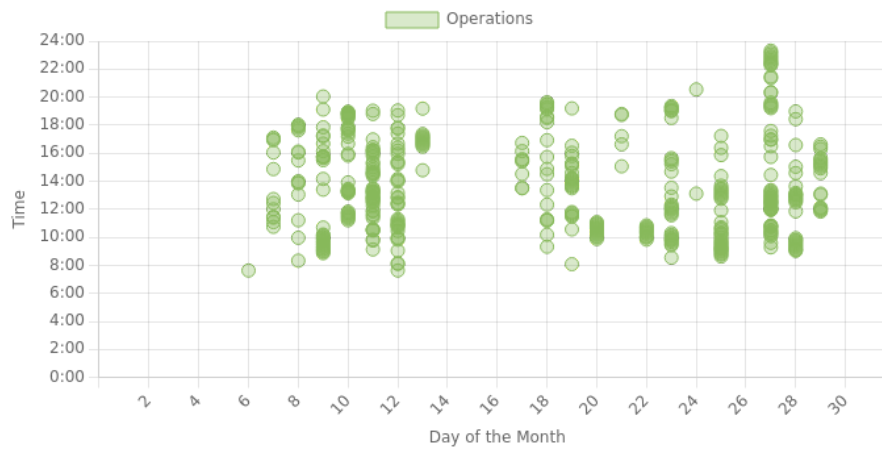
Local/Transient



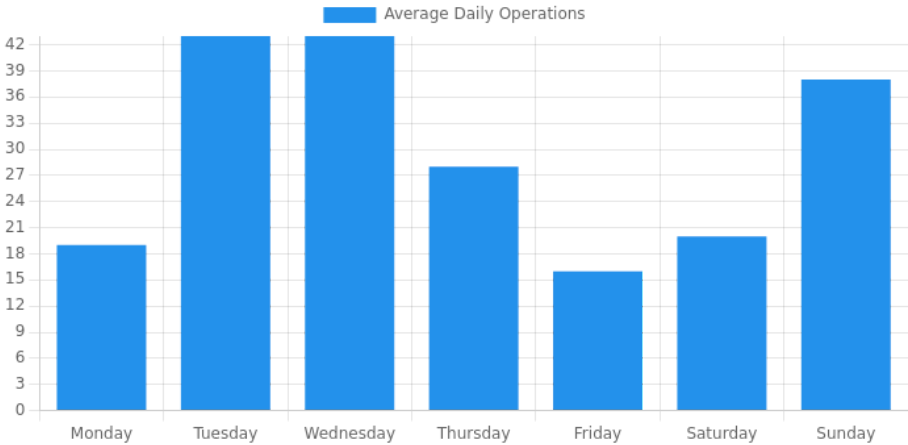
Weight Class



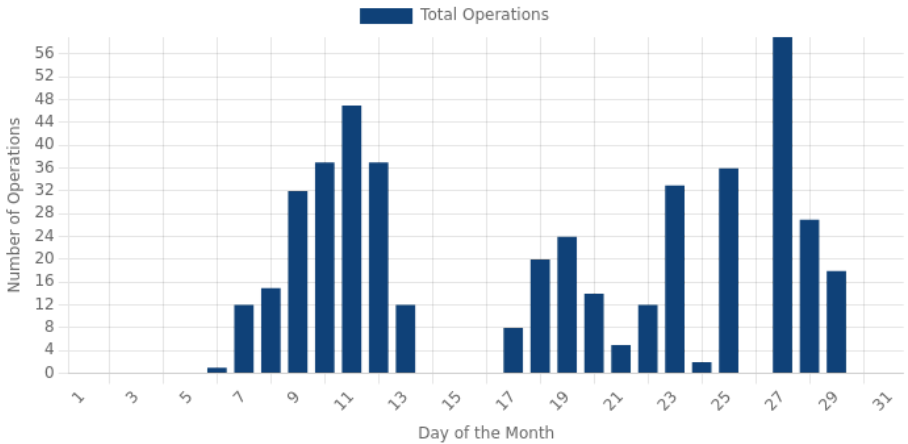
Time of Day



Day of the Week



Daily Operations



Operations by AAC/ADG						
	I	II	III	IV	V	VI
A	568	0	0	0	0	0
B	0	0	0	0	0	0
C	0	0	0	0	0	0
D	0	0	0	0	0	0
E	0	0	0	0	0	0

AAC/ADG Distribution

